

**CT Horse Council
TRAIL NEWS
Volunteer Horse Patrol
SUMMER 2012**



Submitted by Diane Ciano

Your CHC Representation around the state...

CONNECTICUT HORSE COUNCIL

VOLUNTEER HORSE PATROL

CONNECTICUT EQUINE ADVISORY COUNCIL

CONNECTICUT GREENWAYS COUNCIL

**DEPARTMENT OF ENERGY & ENVIRONMENTAL
PROTECTION**

**Recreational Trails Program Advisory Committee
Statewide Comprehensive Outdoor Recreation Plan Committee**

TRAILS FOR EQUESTRIAN USE HAVE BEEN PROTECTED FURTHER !

SEE DETAILS UNDER LEGISLATION

Table of Contents:

Legislative Update - page 2

New Members & Patrol Horses - page 3

Events Gone By... pages 4 - 11

Hoof Beats in Heaven - Farewell - page 11

Natchaug State Forest - **Marked Multi-use Trails - 5 & 10 Mile Loops - pages 6-8**

CT Equine Advisory Council - page 12

CT Greenways Council - pages 13-14

Article - "Bee" Prepared on Your Trail Rides - page 15

Upcoming Events...

Sprague Land Preserve Benefit Ride - Sunday, September 30th - pages 16-17

Pomfret Horse & Trail Association - Fall Foliage Ride – October 21st – pages 18-19

Your CHC Representation around the state...

Legislation

The Connecticut Legislative session was a short session this year. The Connecticut Horse Council tracked a number of bills which may have potentially impacted our members.

Members were asked to email their own legislators to ask for their support and/or cosponsor the bills listed below. Thank you to all who made the effort to contact. The results of this session are below.

A big thank you and much appreciation goes to **President Amy Stegall** for her countless hours and time spent in Hartford and on the phone talking to various legislators on bills that came before the legislature regarding the horse industry.

Another big Thank You goes to **Representative DebraLee Hovey** (Monroe, Newtown) who worked to get equestrian trail use further protected on state lands.

CHC worked with Representative DebraLee Hovey and the DEEP on language modifications to H.B. No. 5262 **AN ACT CONCERNING THE PRESERVATION OF CERTAIN TRAILS AND AREAS FOR EQUINE USE. The legislation passed in the special session.** "Sec. 501. Section 23-10c of the general statutes is repealed. (*Effective July 1, 2012*) The language protects equestrian access on all multi use trails except as noted and strengthens protections for horseback riding.

HB 5262 (as amended by House "A")*

AN ACT CONCERNING EQUESTRIAN USE ON CERTAIN TRAILS ON STATE PARK AND FOREST LANDS.

SUMMARY:

This bill requires the Department of Energy and Environmental Protection (DEEP) commissioner to allow equestrians to use all, instead of designated, multi-use trails in state parks and forests, unless he specifically prohibits such use. It requires that before he decides to prohibit equestrians from a trail historically used for that purpose, he must consult with the Equine Advisory Council. This council was created by law in 2007 to help DEEP study the issue of preserving equine trails in Connecticut.

The bill stipulates that (1) it does not prohibit other public uses of the trails and (2) DEEP's action is not to be considered an expansion of the trails. It also explicitly allows the commissioner to temporarily close a multi-use trail for safety reasons or to protect natural resources.

*House Amendment "A" repeals the law that requires the DEEP commissioner to designate trails in state parks and forests for horseback riding.

EFFECTIVE DATE: July 1, 2012

SPECIFIED TRAILS UNDER CURRENT LAW

The bill eliminates current law, which requires the DEEP commissioner to (1) designate trails in state parks and forests for horseback riding and (2) preserve the following trails for equine use:

1. Larkin State Park trails (Middlebury, Oxford, and Southbury);
2. Airline State Park trails – south and north (Colchester, Hampton, Hebron, Lebanon, Pomfret, Putnam, and Windham);
3. Hop River State Park trails (Andover, Bolton, Columbia, and Coventry);
4. Moosup Valley State Park trails (Plainfield and Sterling);
5. Huntington State Park trails;
6. Natchaug State Forest trails; and
7. Cockaponset State Forest trails.

Such preservation does not prohibit non equine uses of the trails and is not considered an expansion of them.

New Volunteer Horse Patrol Members for 2012

New Patrol Members:

Susan Lauermann, Danbury and her horse “Sassy” will be patrolling the Tarrywile Park

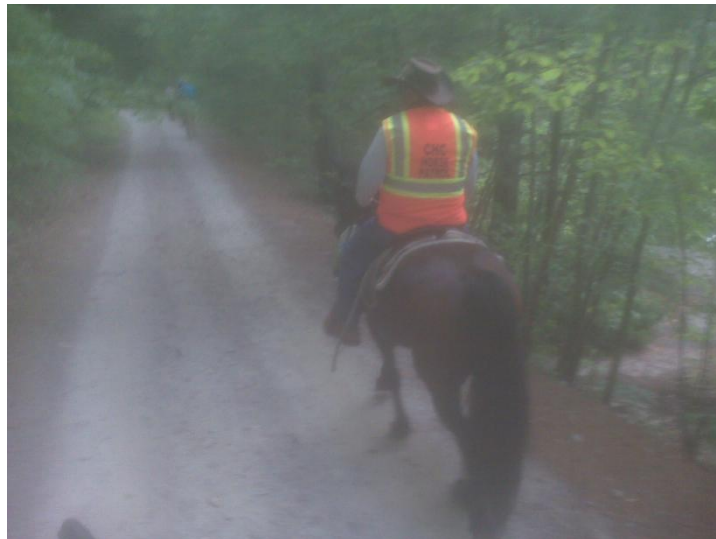
Robyne Cooke-Jaworski, Danielson and her two horses “Rocket” & “Beau” will be patrolling the Natchaug and Pachaug DEEP Areas.



New Patrol Horses:

“Dillilah” - Sue Taricani, Stafford Springs has added her other horse to the patrol along with “Buddie”. Sue patrols the Shenipsit State Forest and surrounding town lands.

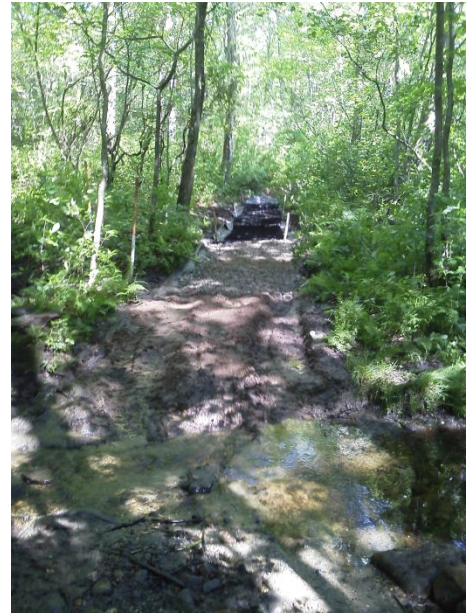
Jose Cuervo aka Lil’ Joe - Monty Moses, Somers rides his new horse in the Shenipsit Forest



Events Gone By...

NATIONAL TRAILS DAY EVENTS

Cockaponset State Forest – Chester, CT



The Lower Connecticut River Valley Horsemen's Club and the Bridle Path Conservancy teamed up with the Connecticut Forest and Parks and the New England Mountain Bike Association for a "combined arms" National Trails Day Event (report by Melissa Evarts)

For June 2, the weather folks predicted about 3 inches of rain (which we got) so we made the decision to postpone our NTD celebration until Sunday, June 3. That morning, we were at it bright and early. Twelve workers (8 BPC/LCRVHC, 3 CFPA, and 1 unknown affiliation) worked from about 8:30 am until after 4:00 pm armoring and repairing erosion on a section of the purple trail off Filley Road in the Pataconk section of Cockaponset State Forest. Chuck Sharples supplied the tractor and operator, DEEP supplied the geogrid and geotextile, BPC/LCRVHC supplied stone and gravel, and CFPA and BPC/LCRVHC supplied the tools and manpower. It was MUDDY. But the feeling of accomplishment when we were done and it had settled in was terrific. Check it out! LCRVHC/BPC participants included: Bill and Kathy Schuyler who shopped, hosted the picnic area, grilled, and fed everyone in waves as sustenance was required—then cleaned up. Also Chuck Sharples, Bob Cameron, Greg Dowler, Melissa Evarts, Kristin Elliott Leas, and Mark Leas, on rakes and shovels. And our CFPA ally and organizer, Rob Butterworth with his crew of Brian Loose, Jay Evita, and a nice guy named Doug (sorry, I failed to get his last name) who helped with the armoring and rerouted a flooded, blocked section of trail, brushing and digging out stumps. Meanwhile 7 LCRVHC riders worked on opening the rest of the purple trail out to Jericho Road. They were Lynda Perry, Gina McManus, Frank Kublick, Ken DeWitt, Pam Cameron, and Pam's two grand-daughters. Thanks to everybody who helped out and participated. Our work promotes equestrians as good trail stewards and helps the entire trail user community. And this trail has the potential to be a nice loop off the Quinimay Trail



Natchaug State Forest

Lost Silver Mine Horse Camp

The CT Horse Council Volunteer Horse Patrol held a Horse Camp Work Day – Camp Out - Blessing of the Mounts and Trail Ride weekend in celebration of National Trails Day the first weekend in June. The Blessing of the VHP members and their mounts was given by Steve Vicchitto. We had a very busy and successful weekend and the pouring rain did not stop members from working on the camp on that Saturday.

The work weekend included clearing the trails, campsites and installing 28 camp posts on each site. A BIG thank you to Bruce Wilder who operated the machinery and made 8 brochure holders for the kiosk, and all VHP members who worked in the rain to put in the posts: Diane Ciano, Meg Sautter, Cat Wilder, Kowboy Ken Forcier and Patti Crowther. Thank you to Randy Greenberg for the donation of his equipment. Other members present for the weekend that helped to clear sites and trails: Vevette Greenberg, Denise Ciano, and Lori Gmuer.

The next phase will be to install two new solar toilets with the help of DEEP!



Bruce Wilder on machine, Steve Vicchitto and Kowboy Ken working on installing camp site posts.



VHP Members at Blessing of the Horse Patrol, Lost Silver Mine Horse Camp

Natchaug State Forest Multi-use Marked Trails

THANK YOU JEAN MORRISON

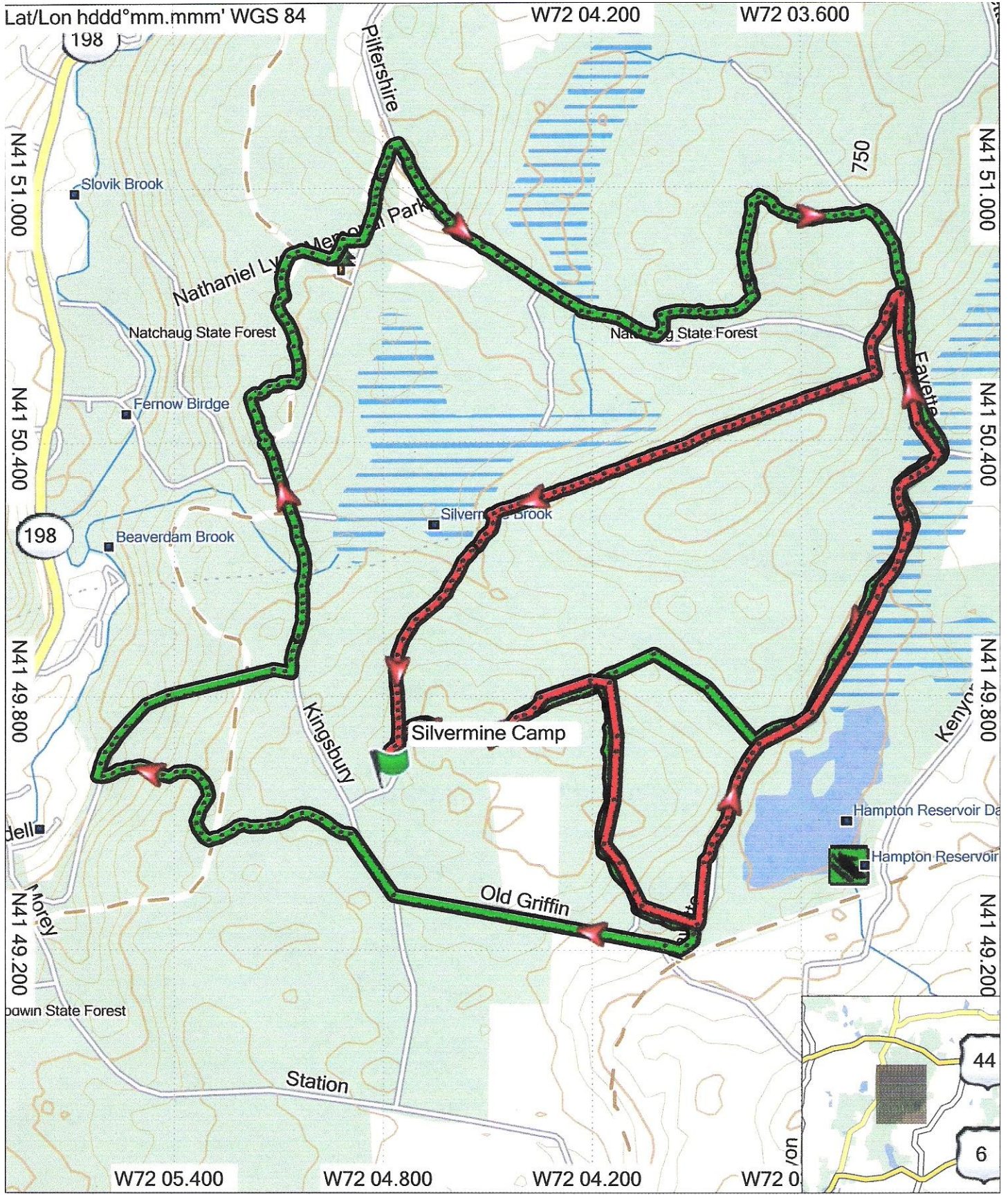
A BIG THANK YOU TO JEAN for single handedly marking the 5 & 10 mile loop trails from the Lost Silver Mine Horse Camp. Jean marked the trails through the fall of last year and completed them this spring, with her trusty and beautiful Iberian Warmblood (Andalusia & American Saddlebred), “La Bonita”.

The Yellow Diamond markers were provided by CHC through the RTA grant to revamp the camp and trails. The map will be posted at the kiosk and is available on line. The following pages have Jean’s 5 & 10 mile loop map and description of the trail systems. The next endeavor is to have a marked loop that would connect to the Goodwin State Forest trails.

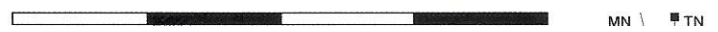


Jean and La Bonita joined the CHC-VHP in 2008 and have been logging patrols mostly in Goodwin and Natchaug State forests and the Airline Greenway. Jean also does competitive trail rides and is a certified riding instructor with the American Riding Instructors Association, in dressage and huntseat. She rides side saddle too!. Jean is also a devoted cat person and resides at her farmhouse, circa 1850 &1950 in Chaplin. CT.

Natchaug State Forest Multi-use Marked Trails



TOPO U.S. 100K



Natchaug State Forest Multi-use Marked Trails **5 and 10 Mile Loops**

The Connecticut Horse Council, under the auspices of the DEEP, has permanently marked two loops for riders starting at the Lost Silver Mine Horse Camp.

Look for the yellow diamond markers. They will be marked with a "5," "10," and/or an arrow.

The **5 mile loop** (actually, 5.7 miles as marked), if ridden counter-clockwise:

- Start at the gate at the front of the camp;
- From the back of the camp take the right-hand trail;
- Bear right on the trail that ends near the corner of Fayette Road and Old Griffin Road;
- turn left on Fayette;
- Your next turn will be a trail on the left that leads you back to the gas line.
- Turn right and follow the gas line to the end and bear left again for the trail back up to the camp.

The **10 mile loop**, if ridden clockwise:

- Start at the gate at the front of the camp;
- From the back of the camp take the right-hand trail;
- Bear right on the trail that ends near the corner of Fayette Road and Old Griffin Road;
- Turn right and follow Old Griffin Road up the hill to turn right on Kingsbury Road;
- Turn left on the trail into the woods and follow it down the hill;
- Turn right onto the gravel road by the river;
- Follow this road until it comes out on Kingsbury Road where you'll turn left;
- Near the point where Kingsbury Road becomes paved, follow the trail into the woods ahead/to the left;
- Cross through the General Lyons park (NOTE: there's a pump in the park in case you brought a sponge & want to put some water on your horse. And in case you were wondering: Gen'l Lyons was the first Union general to lose his life in the Civil War);
- Turn left on Kingsbury Road and follow it up the hill;
- Turn right on Pilfershire Road and follow it down the hill (it's paved for approximately ½ mile, then it becomes gravel road again);
- Your next turn is left into the woods;
- You'll come out onto Fayette Road where you'll turn right;
- Your next turn will be to the right into the woods to proceed back up to the camp.

Sprague Land Preserve Benefit Ride

A Benefit ride to assist the Town of Sprague, CT to purchase additional 230 acres of land from the Watson Heritage Farm to add to the existing 275 acres to the land preserve was held on May 6th. **CHC-VHP members Gail Miller and Loree Osowski** headed the volunteer group to create a very successful event with a turnout of 64 riders. They netted \$2,371 toward the purchase of the beautiful Watson property. There were many raffle items from several donators and the proceeds from that came to \$405! Everyone enjoyed the beautiful trails and waterfalls and riding alongside the Shetucket River. The trails were marked for riders to do a 5 or 10 mile route or combine them for a 20 mile ride. Thank you all volunteers and those that attended to support the fund raiser.

A Fall Benefit Ride will be held on September 30th. See pages 16 & 17 for entry info.



Bridges



Members of the Pomfret Horse & Trail Association worked on rebuilding a bridge with a private landowner agreement they have for Hearthstone Trail in Woodstock. The PHTA had 17 volunteers come out to help that day!



**A covered bridge was put in place in Andover on the Bolton Notch Greenway
A ceremony took place in May.**



CHC-VHP members Meg Sautter on Mac and Denise Ciano on Dancer rode in the New Britain Memorial Day Parade

Hoofbeats in Heaven

Farewell to Joe Celano of Guilford CT. who has entered eternal peace after a year long battle with cancer. Joe was a member of the CHC-VHP and the Cheshire Horse Council. He will be truly missed....hope he is riding in Heaven looking down on us.

Farewell to Patrol Horse "Hero"



Handsome Hero (right) with his actual owner Alyce Mallek was ridden as a mounted Patrol Horse by Melissa Evarts on left with her other horse Homes. The picture was taken at a presentation the VHP did for Scout leaders at Deer Lake Scout Reservation 2 years ago.

Your CHC Representation around the state...



Thanks to DEEP Trails and Greenways Coordinator, Laurie Giannotti, a web page has been set up about the Council, its goals and accomplishments on their website. You can access this website from the CHC website under the heading of "Trails" or go directly to:

http://www.ct.gov/dep/cwp/view.asp?a=2707&q=438826&depNav_GID=1642

Council members have met twice this year with discussions that have been very successful with the DEEP and the CT Forest & Park Association. Discussions include updates regarding parks and forests around the state, promotion of multi-use trails, the RTA grant update on the Lost Silver Mine Horse Camp and Legislation. Member Ruth Beardsley has been working on collecting information for a Trail surface study. Past Meeting Notes will be posted on the EAC web site shortly.

2012 Meeting Schedule:

The EAC will meet at the Northeast Utilities Complex located at 3333 Berlin Tpke, Newington, CT from 6-9 PM on a quarterly basis. The next EAC meeting will be on Thursday September 13th

The public is always welcomed.

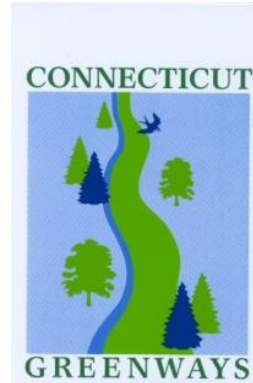


Picture of Council Members appointed by the 5 Congressional Districts;

Front row: **Meg Sautter** (1st - Newington), **Diane Ciano** (5th - Plymouth), **Ruth Beardsley** (3rd - Bethany),
Back row: **Jan Collins** (2nd - Somers), **Laurie Giannotti**, CT Department of Environmental & Energy Protection Liaison **Judy Beliveau**, (4th - Oxford), **Leslie Lewis**, CT Forest & Park Association / minority leader of the Senate,
Missing from Photo, Amy Stegall, President, CT Horse Council.

Your CHC Representation around the state...

Jan Collins, CHC Greenways Representative



June 1, 2012

Governor's Greenways Council Presents 13th Annual Greenways Awards

Designates Five New Connecticut Greenways

The Governor's Greenways Council today commended six individuals that have made significant contributions to the promotion, development and enhancement of Greenways – linear open space in Connecticut – and designated five new greenways at a ceremony this morning at the Firehouse on the Steele Brook Greenway in Watertown.

Susan Frechette, Deputy Commissioner of the Department of Energy & Environmental Protection (DEEP) said, "Connecticut's countryside is made up of thousands of miles of recreational trails and river corridors, including greenways that provide users with creative and unique ways to travel. By land, by waterway --- on foot or on bicycles -- Connecticut provides something for everyone in the great outdoors. Today's ceremony recognized a selection of dedicated and passionate volunteers, who for years have supported and worked to make greenways in their communities a reality."

"This year's event took place on the Steele Brook Greenway; A Connecticut Designated (2009) Greenway in Watertown," said Mark N. Paquette, Chairman of the Connecticut Greenways Council. "This scenic location provides a place for safe recreational activities including walking, running, cross country skiing and wildlife viewing and illustrates the importance of linking key linear space in Connecticut."

Greenways in Connecticut cover thousands of acres throughout every county in the state and may include paved or unpaved trail systems, ridgelines, or linked parcels of open space. Many other communities around Connecticut have chosen, through greenway designation, to recognize the importance of river corridors for natural resource protection, recreational opportunities, and scenic values.

The Steele Brook Greenway is a tributary to the Naugatuck River and is part of the National Parks Service America's Great Outdoors Initiative in Connecticut. America's Great Outdoors Initiative is designed to reconnect Americans, especially children, to America's greenways, rivers and waterways, landscapes of national significance, farms, forests, parks, and beaches by promoting community-based recreation and conservation.

The Council presented the following awards:

2012 CT Greenways Council Award Recipients

Roseanne Gottier – special achievement award. Roseanne helped establish Conserving Tolland—a land preservation group that has saved more than 1000 acres in Tolland. The work done in Tolland has motivated other towns to promote their conservation efforts.

Bryan Hurlburt – state government achievement award. State Representative (D), serving the 53rd District (Ashford, Tolland and Willington) and lifelong resident of Tolland is being recognized for his contributions to open space and greenways in Tolland County.

Kate Rattan – transportation achievement award. Kate is the Non-Motorized Transportation Coordinator and Transportation Planner II, within the Bureau of Policy and Planning, at Connecticut DOT. Kate has brought a renewed enthusiasm to CT Greenways in support of her Agency's new bicycle and pedestrian policies.

Mark Carlino – government achievement award. Mark is being recognized for his contributions to greenways serving as Manchester's Director of Public Works.

Bruce Dinne – municipal achievement award. Bruce is Vernon's Park and Recreation Director and has led both town and regional trail planning efforts. Bruce continues to develop and improve Vernon's trail system.

Eric Weiss – nonprofit achievement award. Eric is the Trail Program Coordinator for the East Coast Greenway (ECG) Alliance. Eric has been an enthusiastic leader in closing the gaps in the ECG through Connecticut.

2012 Officially Designated Greenways

The Menunketesuck - Cockaponset Regional (MCR) Greenway - The MCR Greenway's purpose is to protect the private and working forest land, water quality and quantity, wildlife habitat, public recreation, and scenic resources that create the character and economic vitality of the lower Connecticut River and Coastal Region. The quality of their community character and environment is important to each of the participating communities of Westbrook, Clinton, Deep River, Killingworth, Chester, and Haddam. For more information contact [Margot Burns](#) at the CT River Estuary Regional Planning Agency.

The Menunketesuck Greenway - This greenway in Westbrook connects the Menunketesuck-Cockaponset Regional Greenway (detailed above), to Long Island Sound. Within the Menunketesuck Greenway, over 1500 acres are currently preserved as open space in the towns of Westbrook and Clinton. The Greenway includes the Kirtland Landing Boat Launch at the head of the Menunketesuck River and extends through the Stewart McKinney Wildlife Refuge providing access to Long Island Sound. For more information contact [Meg Parulis, Westbrook Town Planner](#).

Pomperaug River Greenway, Southbury - The Pomperaug River is an artery of vital significance to the people of Southbury, and is a connecting force within the multi-town watershed region. Named for the sachem of the Paugusset Indian tribe that lived along its banks, it has been the center for historical development of our modern communities. The progression of mills, factories, and farms transitioning more recently to modern businesses, schools, parks and residential areas, have centered on and benefitted from the river and its underlying aquifer. In particular, today the most significant local and regional supply of drinking water resides along the banks of the Pomperaug in Southbury. For more information, visit The Pomperaug River Watershed Coalition's [website](#).

The Quinnipiac River Gorge Trail - Construction of the 1.3 mile linear trail alongside the Quinnipiac River in the City of Meriden was completed in 2007. The Gorge Trail is a ten-foot wide asphalt multi-use trail with the use of motorized vehicles prohibited. The paved trail has been constructed to adhere to A.D.A. (Americans with Disabilities Act) requirements for handicapped accessibility. The trail sits on the railroad bed of the Meriden, Waterbury & Connecticut River Railroad (circa 1890's) and provides scenic viewing areas along the Quinnipiac River. The City of Meriden and the Inland Fisheries Division of the CT DEEP entered into a cooperative effort to enhance habitat in the Quinnipiac River. These enhancements involved the construction of two rock vanes along the Quinnipiac River bank. These structures create thermal refuges, which are critical for trout during the summer months when river water increases above optimum temperatures for their survival. For more information visit [The City's website](#).

Shetucket River Greenway Extension - Lisbon, Preston and Norwich. The Shetucket River is a 25 mile tributary of the Thames River. It flows through the towns of Windham, Franklin, Scotland, Sprague, (section designated by the CT Greenways Council in 2011) Lisbon, Preston and Norwich ending at historic Chelsea Harbor in the City of Norwich where it joins the Thames. The goals of the Shetucket River Greenway extension are three-fold:

- increasing public recreational opportunities,
- protecting valuable natural resources, and
- developing a unified, regional approach for this resource.

"Bee" Prepared on Your Trail Rides

by Bob Jeffreys & Suzanne Sheppard

As we enter Autumn, we need to remember that this is the season when bees or wasps are most aggressive and defensive of their nests. We were reminded of this recently when only one horse/rider combination of four returned to the ranch. We did find the others and thankfully no horses or riders were seriously injured, but they were stung repeatedly and were pretty shaken up. One particular horse took the brunt of the attack and was stung all over his body.

Unfortunately, bees and wasps are a part of life that we can't do much about so we have to respect their presence, do what we can to minimize attacks, and know what to do if we are attacked. Firstly, try to stay on well-traveled paths; don't chance veering off into undisturbed areas. In particular avoid dead trees or logs and keep your eyes open for nests in trees.

However careful you are, if you ride often enough, you will disturb a nest. Yellow jackets most commonly nest in the ground. If you accidentally step on the nest, you'll be dealing with an angry group of flying, stinging insects.

If you are with a group it helps to have a plan. Determine beforehand what you will do if your group encounters bees or wasps. What we've learned works best is to have a code word such as "BEES" to be shouted loudly. Upon hearing this word, everyone should be prepared to move away quickly and keep going for at least a quarter of a mile. Most bees/wasps won't travel further than that, but some may. If the attack hits the lead horse, the rest of the group should leave to the rear and that lead horse should continue forward. You can all meet up again at a predetermined rendezvous point. Try to stay on the horse and get it to move away from the site of the attack. If you are bucked off, get away as fast as you can on foot you can look for your horse later.

If a horse gets stung severely, the best thing you can do is hose them off with cold water as soon as possible; check with your vet, but if you can't reach him or her, give the horse a shot of Banamine (about 5cc's) to calm them down and administer an antihistamine or a steroid such as Azium. They should be fine and all welts should be gone in a day or so.

If you know that you or any member of your group is allergic to bee/wasp stings, carry the appropriate medicine as prescribed by your doctor on all trail rides. To increase your safety you may wish to carry a cell phone, but lots of trail areas are not near cell towers; that's why it's important to have a predetermined meeting place arranged with your group.

Encountering such an incident is not pleasant, but if you keep your wits about you, and leave the area quickly, you should be all right and you'll have some "new" material to share with your buddies. Safe riding!

Up Coming Events.....

FALL SPRAGUE LAND PRESERVE BENEFIT RIDE 2012

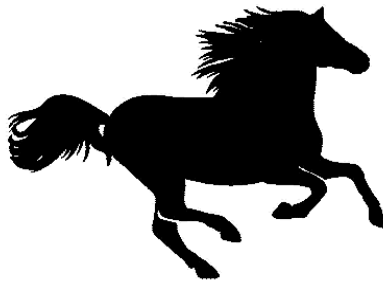
Sunday, September 30th 2012 (light rain or shine)
Rain Date Saturday, October 6th 2012

Sponsored by WEST GREENWICH HORSEMAN'S ASSOCIATION
7/15/22 NEHT/WGHA affiliated miles

Sign in at 8:30 - lunch at @12:30 riders must be back by 5:00pm

Benefit ride to assist the Sprague Land Preserve purchasing an additional 230 acres of land from the Watson Heritage Farm to add to the existing 275 acres to the land preserve. Open land is disappearing fast but our trails and woods can be preserved. Let's make a difference. Please come and ride these beautiful trails and save them for the future.

"Save our trails"



Paid entry fee includes:

**A snack before ride and lunch after. Additional lunches are \$5.00 each
T-shirts are available for \$10.00 Raffle prizes will be drawn after lunch.**

Tickets for the raffle table are \$1.00 each or \$5.00 for 6 tickets.

Secretaries for sign in: Sandy Andrews and Cathy Gluck.

**Ride manager: Celeste Santos 860-564-6522 morgan.cb@att.net
Linda Krul 401-397-5768 dakrul@hotmail.com**

Ride contact on trails: Phyllis Alexander 860-608-3915

Short gentle flat loop @7 miles. Long loops @13-15 miles with some hills.

Ride is on dirt roads, single-track trails, waterfall, fields and some hills. Some of the trails follow the Shetucket River and a view of the Scotland Dam. All riders must be back by 5:00 pm. Ride or hike or just attend and have lunch.

Please remove all manure and hay from your area.

Parking at Ayer Mt. Farm, Ayer Road, Franklin, CT., 06254

Directions:

I-395 South

Exit 82, Take right off the exit ramp onto Route 32 North, and then Right onto

Route 207, go 2.5 miles, then take a left onto Ayer Road, follow the signs to the parking area in the field.

Sprague Land Preserve Trail Ride
Sponsored by West Greenwich Horseman's Association

SUNDAY, September 30th, 2012 - rain date October 6th, 2012
7/15/22 Miles NEHT / WGHA affiliated
Park at Ayer Mt. Farm, Ayer Road, Franklin, CT 06254

Name _____ Phone _____

Street _____ Town _____ State _____ Zip _____

Horse's Name _____ Coggins# will be checked at secretary's table

Breed _____ Adult/Junior Rider NEHT # _____ Horse# _____

Email: _____

Ride Fees: Pre-entry and payment must be received by September 27th to guarantee lunch. Pre-entry consist of a completed entry form, payment and signature by the date stated above. 1 entry per person.

Mail to: Celeste Santos 964 Ekonk Hill Road Voluntown, CT 06384
email morgan.cb@att.net or call 860-564-6522

Website: www.orgsites.com/ri/wgha

Make checks payable to: Friends of the Shetucket River Valley.

Pre-entry: \$20.00
Post entry: \$25.00
Junior (rider 18 and under) \$10.00
Lunch for non-rider: \$5.00
Raffle tickets are \$1.00 each OR 6 for \$5.00

Amount Enclosed: _____

Check in time: 8:30

Lunch @ 12:30 – 1:30 Riders must be back by 5:00pm

Fee includes: Snack before ride and lunch after Coggins and rabies certificates required

Waiver of Liability

Under Connecticut law, each person engaged in recreations equestrian activities shall assume the risk and legal responsibility for any injury to his person or property arising out of the hazards inherent in equestrian sports.

****For safety reasons we are strongly recommend a red ribbon in the tail of horses that kick, a green ribbon in the tail of green horse or rider and a yellow ribbon in the tail of a stallion.**

THE WEST GREENWICH HORSEMAN'S ASSOC. OR THE OWNERS OF **Sprague Land Preserve, Watson Heritage Farm Property/owners or Konow Property/Fishing Camp or Ayer MT. Farm** WILL NOT BE RESPONSIBLE FOR ANY LOSS, DAMAGE OR INJURY TO RIDER, SPECTATOR, OR HORSE OR DAMAGE CAUSED BY ANY HORSE OWNED AND OR RIDDEN BY HIM/HER AND SHALL NOT HOLD THE WEST GREENWICH HORSEMAN'S ASSOC. OR THE OWNERS OF THE SAID PROPERTIES LISTED ABOVE LIABLE.

Signature of this form consents agreement to these conditions as well as the WGHA event rules. A representative who is of age must sign the entry blank and who, by such signature, individually accepts responsibility and risk as stated above.

ASTM/SEI approved helmets strongly suggested, required for riders under 18 years.

Please be advised that photos may be taken at this event for use in WGHA publications as well as the Pedlar magazine. Please indicate below if you do not consent to have your picture published in this manner.

Signature _____ Date _____

Signature of Parent/Guardian of minor child _____

Emergency # _____

Allergies/Medical Issues _____

Pomfret Horse & Trail Association

www.pomfrethorseandtrail.com

Fall Foliage Ride **Lunch & Raffle**

Sunday, October 21, 2012

Location ~ Private Farm in Pomfret *

Registration opens at 9:00 am

Last rider out by 10:30 am

Cost \$40 includes lunch

Limited to 40 riders

Location and directions will be sent by email after registration and payment have been received.

Ride Secretary

Sue Jackson

92 Orchard Hill Road

Pomfret Center, CT 06259

sjackson3773@att.net

Pomfret Horse & Trail Association

Fall Foliage Ride

Sunday, October 21, 2012

Registration opens at 9:00 am

Last rider out by 10:30 am --Lunch to follow

REGISTRATION FORM

Name(s) _____

Address _____

Telephone _____

E-mail _____

- ▶ Please include copies of current **negative Coggins and rabies certificates.**
- ▶ Please sign the attached **Release Form.**

▶ **Cost:** \$40 includes lunch

Enclosed is a check for _____ rider(s) payable to Pomfret Horse & Trail Association.

Ride will be held at a private farm in Pomfret. Location and directions will be sent by email after registration and payment have been received.

Please mail forms and check to:

Sue Jackson

92 Orchard Hill Road

Pomfret Center, CT 06259

For more information contact Sue Jackson at sjackson3773@att.net

POMFRET HORSE & TRAIL ASSOCIATION

Release and Hold Harmless Agreement

Pursuant to Connecticut General Statutes Section 52-557p, I acknowledge the inherent risks involved in riding, working around, or being in close proximity to horses, which risks include, without limitation, bodily injury and death to either horse or person. I hereby assume those risks on behalf of myself and my child or ward, if the rider is under 18 years old.

Furthermore, on behalf of myself and my child or ward, if the rider is under 18 years old, I do hereby release and hold harmless Pomfret Horse and Trail Association ("PHTA"), its officers, directors, members, the landowners on whose real property events may occur (including but not limited to landowners who are PHTA members), and any other agent, servant, employee, independent contractor, volunteer or organizer of or on behalf of PHTA from all liability for negligence resulting in bodily injury, death or illness to myself or any family member or spectator accompanying me, or resulting in damage to any property I use, including without limitation the horse or horses which will participate in any event, for anything suffered while attending, competing, spectating or in any other way involved in the equine events of PHTA for any reason whatsoever, including that caused in whole or in part by the negligence of PHTA, its officers, directors, members, said landowners, agents, servants, employees, independent contractors, volunteers or organizers.

Additionally, on behalf of myself and my child or ward, if the rider is under 18 years old, I accept and agree to comply with the Membership Policy and Trail Use Regulations of PHTA, which include, among other provisions, requiring every rider to wear appropriate leather footwear with heels and a helmet which meets ASTM/SEI standards properly secured at all times while mounted. I have received a copy of the current Membership Policy and Trail Use Regulations.

I also represent that I (or my child or ward, if the rider is under 18 years old) have medical insurance in the event that I (or my child or ward, if the rider is under 18 years old) is injured, that I will continue to have such medical insurance in effect at all times, and that I (and my child or ward, if the rider is under 18 years old) will seek reimbursement for all medical expenses solely from said insurance.

I have received a copy of this Release and Hold Harmless Agreement.

Rider's signature

Parent or guardian must sign if rider is under 18 years old

Date